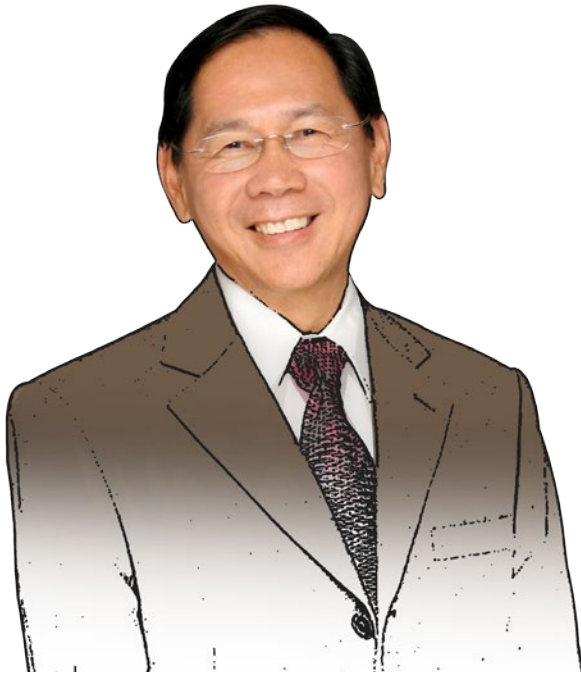


The logo for NSL link features the letters "NSL" in a large, bold, white sans-serif font. To the right of "NSL", the word "link" is written in a light blue, cursive script font. A thick, light blue curved line underlines the word "link". The entire logo is set against a dark blue background with a subtle grid pattern of lighter blue squares.

Advancing with

TECHNOLOGY



A Note from Our Executive Director

Dear colleagues

NSL recognizes the importance of leveraging on technology for continuous improvements and innovation to improve productivity and cost.

The quest to keep us relevant and competitive in the fast-evolving technological landscape is evident in NSL through the establishment of Corporate Research and Development (CRD) Panel. Comprising scientists, academicians from universities and technical experts from government bodies, the panel meets regularly to review proposed projects and discuss new business development.

Over the years, NSL has witnessed how harnessing the power of technology has helped to accelerate our competitiveness. Engineering Division has created new products such as RAM Revolver and the cost effective Twin 40' headlock system in response to market needs. Through numerous product reformulations, Dry Mix Division has built significant competitive advantage in the industry. Environmental Services Division has implemented an IT system in waste and fleet management business to increase work efficiency and productivity.

NSL also leveraged on technology to ensure the processes are greener by reducing wastage and harmful emissions or manufacturing products that are recyclable. Some examples are the new line of environmentally-friendly Cheston products from the Environmental Services Division and the Dry Mix's higher value added eco-label product range.

It is equally essential to invest in the future for potential areas of growth. Some potential new businesses that NSL is looking at are treatment of effluent and cost effective soil stabilization.

It is imperative that we continue to be on the lookout for new technologies and innovation. Let's continue to focus on technology initiatives to provide innovative solutions to ride the challenges of tomorrow.

Oo Soon Hee

NSL PBT improved to \$8.7 million in 2Q2015

The better performance was mainly attributable to the improved contributions from Precast & PBU and Dry Mix Divisions

- Turnover increased slightly to \$110.3 million

Financial Highlights	THE GROUP					
	Quarter ended			6 months ended 30 June		
	2Q2015 S\$'000	2Q2014 S\$'000 (restated)	Change %	2015 S\$'000	2014 S\$'000 (restated)	Change %
Group Turnover	110,325	109,442	1	210,187	213,299	-1
Group Profit Before Tax	8,740	1,510	479	12,469	3,669	240
Group Profit Attributable to Shareholders	7,058	709	895	9,337	1,785	423
Earnings Per Share (cents)	1.89	0.19	895	2.50	0.48	423

NSL Ltd reported a turnover of \$110.3 million in 2Q2015, 1% higher than \$109.4 million achieved in 2Q2014.

Group Profit before tax increased to \$8.7 million, driven by the improved contributions from Precast & PBU (“Prefabricated Bathroom Unit”) and Dry Mix Divisions, and the receipt of dividend income of \$0.8 million from an available-for-sale investment. However, pre-tax profit from Environmental Services Division was lower due to weak oil prices.

After taking into account income tax, the Group reported a profit attributable to equity holders from

continuing operations of \$7.1 million in 2Q2015 compared to \$0.7 million in 2Q2014.

Outlook

The Precast business in Singapore and Dubai is underpinned by a healthy order book while that of the Malaysian operation will continue to be challenging. However, risks associated with project delays and execution cannot be ruled out in the industry in which it operates. In the PBU business, Parmarine is expected to continue to contribute positively to the division’s overall results.

The firm demand for Dry Mix products across the region would

continue to sustain the Division’s performance.

In the Environmental Services Division, demand for its distribution business and waste management services is expected to remain firm. Weak oil prices will continue to adversely impact the Division’s Recycled Fuel Oil business.

The order book for our associated company in the business of bulk cargo and container lifting device, PEINER SMAG Lifting Technologies GmbH (“PSLT”), remains satisfactory, but PSLT will have to face the challenges posed by weak global markets.

Technology – Now and Then

Technology has helped mankind advance in all aspects by leaps and bounds. With each new discovery and development, we fight diseases, carry tiny computers in our pockets, build cars that drive themselves, and walk in space. The future holds endless possibilities that are still dreams at this point, limited only by the technology of this century that is still developing rapidly.

The world at your fingertips

Perhaps the biggest impact technology have on people is the advent of the Internet. It opened up the world and shrank time and space as it enabled people to communicate across the globe without being physically present. With just a few clicks on an Internet browser, one can access news, book vacations, or satisfy their thirst for knowledge online without having to flip newspapers, thumb through phone books or scour

encyclopedias. As long as one is connected to the Internet, the world is literally at their fingertips.

Faster flow of information

With accompanying technologies such as Bluetooth and Wifi, ‘smart’ gadgets and appliances have flooded the markets and entered our homes to offer conveniences that have become a way of life. Smartphones are a common sight in the developed world, offering consumers a 24-hour newsfeed into each other’s lives via social media platforms for those who want to share it. Unlike a decade ago, when cell phones were just used for calling and texting, people now are empowered to become content producers in their own right, uploading sights and sounds in the



street faster than media outlets. The power of social media such as Facebook, Twitter and Instagram has enabled widespread movements and support for noble causes as it connects people from all walks of life together.

Life without technology

Whether in the medical field, communications, transport, education or industrial, technology has made lives more convenient and efficient. In fact, we can barely remember how we use to live without it.

We asked around for the one technology you cannot live without and why.

1

Mobile technology and smartphones:

So I can do everything on the go! Communicate with friends, make bill payments, take photos, listen to music on the go, etc.



2

Automobiles:

Otherwise it would take ages to get to another place on foot.

3

Washing machines:

I have a family of six. Without washing machines, the clothes will pile up faster than I can wash it.



Bringing Us Closer Together

A VoIP phone used by both NSL OilChem Waste Management and RSLT

One of the oldest and most simple uses of technology in business is tele-conferencing. Telephone conferencing help companies save millions of dollars each year by eliminating costs involved in sending employees to face-to-face meetings. Despite how popular telephone conferencing is among companies, the game changer came when Voice over Internet Protocol (VoIP) was introduced, launching the birth of VoIP services such as Skype and video conferencing.

In layman terms, VoIP is a method of converting ordinary analog audio signals into digital signals that can be sent over the Internet. This means that as long as users have an Internet connection, they will be able to place free long distance phone calls to anywhere, bypassing landline service charges from phone companies. Users can now make calls from home, on vacation or during business trips through their notebooks or handphones.

The key factor to install both VoIP and video conference systems for NSL is the significant reduction of time and cost. Even if travelling is not necessary, International Direct Dialing calls via landlines will cost companies a bomb, as opposed to VoIP services, which only cost a fraction for the same function.

Video conferencing works in the same way as a telephone conference, with the addition of video. A camera is usually placed on top of the screen and the visuals are transmitted to each party in the conference. All parties can see each other, as well as view accompanying Powerpoint presentations at the same time. With the addition of visuals, video conferencing allows meetings to be more personal. A meeting held with a client or overseas colleague through video conferencing would seem more sincere and welcoming than a telephone or text-based conference; it is as close as one can get to being 'face-to-face' without actually both being in the same room.

With the video conferencing system, setting up meetings across multiple sites is a breeze. As soon as all

parties involved agree on a time for the conference, all they need to do is to log on to start. Ideas can now be shared and discussed with much lesser time needed. This is especially handy if there are sudden crises where prompt decisions involving multiple parties are to be made.

Through the use of both the systems, the NSL Group has benefited by the reduction of costs such as flight tickets, accommodation, allowances or transportation. Additionally, a lot of time is saved as employees need not travel two hours to a day, depending on the location. The first company to implement video conferencing is NSL Headquarters in Q1 2014, followed by EMIX HK, China and EPS and EPM. The VoIP system was implemented 5 years ago in EPM Seelong, NSE China and ETM Ipoh.

Meetings can be conducted with three companies via video conferencing with Powerpoint presentation.



Dubai Precast Inks a Contract to Supply Breakwater Units

Dubai Precast (DPC) was recently awarded a contract for the supply of Shephard Hill Energy Dissipator (SHED) breakwater units. SHED units were originally installed in the late 1990's to form breakwater structures around the famous Burj Al Arab Hotel island. The units are designed to absorb the force of the waves. Over the years, some of the lower layers have been damaged and need to be replaced.

DPC will manufacture 1500 SHED units over four months, producing up to 20 units daily. Each unit is a hollow concrete cube with sides

measuring 1.3 m and a weight of 2.5 tons. A third party contractor will remove the old units and replace them with the new ones. Production started in July and deliveries commenced in the first week of August.

The units were required to match the appearance of the old units and must withstand the sea front conditions, so white cement and Glass Reinforced Plastic reinforcement bars were used. The shape is complicated so it was obvious from the beginning that the greatest challenge was the

moulds. Mr Ove Pedersen from the fabrication and production team put in numerous hours and conducted several trials until they managed to solve the puzzle and make it work. The moulds are very complicated three-dimensional structures designed for quick demoulding and reassembly.

Dubai Precast is proud to be associated with such an iconic project like Burj Al Arab Hotel. It is hoped that this product will be used elsewhere, providing us a new business opportunity group-wide.



Completed SHED units



Preparing the SHED mould



Sea front with SHED units



The beautiful Burj Al Arab hotel



Malaysia's first carousel system for tunnel segment production

First in Malaysia to Use Carousel System for Tunnel Segments

As the reliance on public transport rises in cities, more rail networks have to be built to meet the demand. This has led to the increasing orders to supply tunnel segments. To ease the demand, Eastern Pretech Malaysia (EPM) commissioned a carousel system in the Seelong plant in 4Q 2014 to increase the production efficiency of tunnel segments for rail networks. EPM is the first precaster in Malaysia utilising a carousel system for tunnel segments.

Moulds are first placed on a mechanical conveyor which automatically transfers the moulds to its respective work-stations, i.e. placement of rebar, concreting and trowelling. They are then transferred to the heated curing chamber for a time period required in the specification. After being cured, the segments are removed from

its mould. This new technology enabled EPM to reduce production time and manpower as previously the production of tunnel segments are cast statically and manually.

As the selected precast tunnel segment manufacturer for Thomson Line in Singapore, EPM has to ensure that lining segments are constantly supplied on schedule without compromising on cost & quality. Tunnel boring machines dig underneath the busy streets between Springleaf and Lenton station, building tunnels ring by ring. A cessation of the tunneling due to the shortage of segments or poor segment quality would be detrimental and will result in cost escalation.

With the recent addition of the carousel system, EPM's value proposition to its clientele has been strengthened.



Tunnel Segment Moulds in its respective work-stations



Curing chamber, where the tunnel segments will be transferred and steam will be emitted to accelerate curing of concrete.



Manning of the whole system is computerised and monitored in the control room.



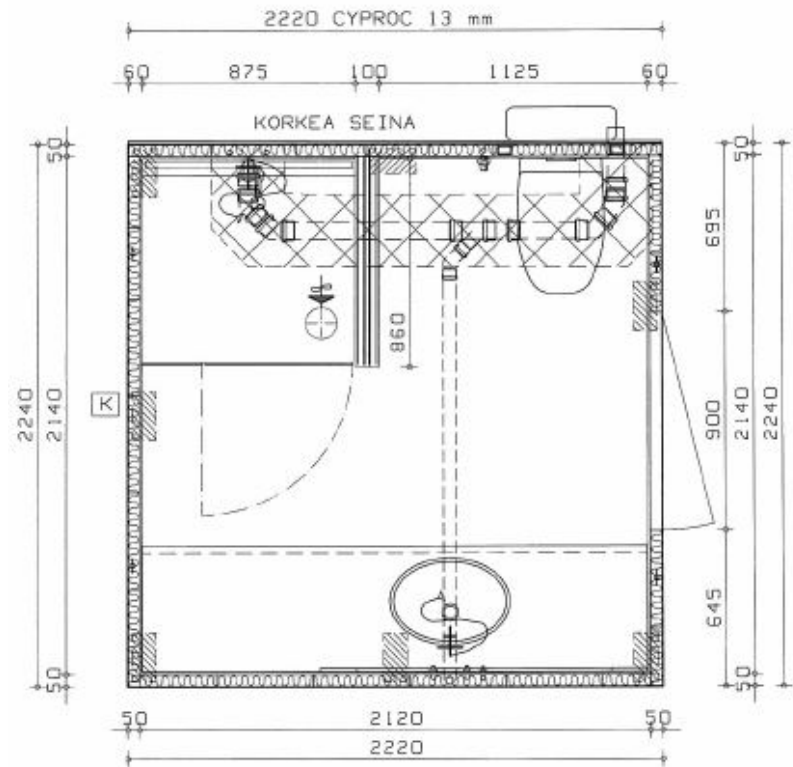
Finished Product ready for delivery.

Parmarine Designs Bathrooms in 3D

Parmarine prefabricated bathroom units (PBU) are designed by 11 experienced designers. PBUs are highly customizable industrial prefabricated entities made according to the needs of the customer. The bathrooms have to be designed in every detail, from the length of each tile to the exact position of the bathroom fixtures, before manufacturing can commence.

Parmarine started using computer aided design (CAD) in the beginning of the 1980's. Using the old program, designers could only design in a 2D format. The need for further updating came when the production of steel sheet cassettes was automated; some other machines were also acquired as more processes were to be automated. Upgrading was really important so that the design program and production machines communicated in the same language. Vertex System Oy, a company specializing in industry-specific CAD software, created a customized system for Parmarine's designing requirements which was also compatible with the machines used in the production line in 2013.

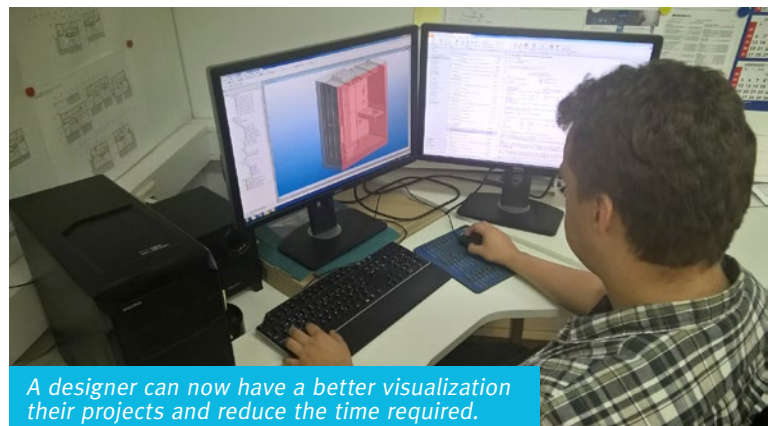
The newly added 3D system has enabled designers and customers to have a clearer visualization of their bathroom designs. As a result, the design time has been greatly shortened and overall productivity improved.



An example of a 2D diagram before the system upgrade



3D render of a bathroom using the new software



A designer can now have a better visualization their projects and reduce the time required.

EIM Achieves ISO Standards

EMIX Industry Malaysia (EIM) is delighted to announce that they have been certified to ISO 9001, ISO 14001, and OHAS 18001 by SIRIM QAS International. The certifications are a recognition of their uncompromised commitment in delivering high-quality products and services that meet the best practices of the industry, with operations complying with ISO standards for Quality Management System (QMS), Environmental Management System and Occupational Health and Safety Management System.

21 EIM internal auditors were trained in the three systems to help them better understand their roles and involvement in the audit process. They also learned ways to promote and improve consistency and the effectiveness of the organization. Internal auditors are an integral part of the entire ISO certification journey, as they act as the

frontline of assessing an organization's performance in terms of system management.

Implementing the three system audits will enhance EIM's commitment to the E.MIX Group's value drivers of "Quality, Partnership, Innovation", which are the guiding principles for EIM's products and services. To achieve consistency, EIM maintains a strict compliance to established procedures throughout the manufacturing processes. Quality is ensured through fully equipped laboratories capable of testing raw materials and finished products.

EIM is confident that the systematic approach of ISO standards will make the company be a better-rounded corporate citizen that strives to achieve excellence in quality, environmental and safety commitments.



EIM's team of internal auditors



ISO training at Sri Petaling Hotel



Mr Sim receiving a trophy from Mr Andy Yip for his long-award service

Mr Sim Beng Hock, the Plant Advisor of E.MIX China, has witnessed the rise of the E.MIX business over the years and was a key part of it with his involvements in planning, setting up and managing the operation of all E.MIX manufacturing sites. He has been instrumental in getting EIM certified in ISO standards for all the four plants in Malaysia.

"The gratification of sharing my knowledge to all E.MIX companies in all aspects of the business is why I am here for this long," said Mr Sim. In fact, he retired once in April, 2012 but joined E.MIX China again in September 2012 as he realized the plan for regional headquarters in Zheng Cheng, Guangzhou and found the installation and commissioning supervision of it too interesting an experience to be missed. The company would like to take this opportunity to express appreciation of his solid contributions over the years.



Robotic Arm in Zengcheng

In this century robots are king in manufacturing production lines. Moving with calculated speed and precision, robots help factories meet production deadlines and eliminate potential injuries in otherwise accident-prone processes. EMIX China's factory in Zengcheng has a production line which is fully automated. The entire 40 meters of production processes from packing to robotic stacking requires only two employees.

Perhaps the most interesting feature of the line is the Nachi robot arm installed in 2013, which stacks freshly packed EMIX bags onto pallets for shipment. At 40 kilograms a bag, it would have taken two men to safely load a single pack of EMIX. It would also take more time than if the process was automated, as well as exposing workers to injury from repetitive strain on their bodies.

The robot arm has a maximum lifting capacity of 180 kilograms, including its bag-gripping mechanism and is able to lift three bags at a time effortlessly and smoothly at maximum speed. Compared to the old system used previously, the robot arm is easy to control, has less moving mechanical parts and requires less space. It is capable of

moving in four axis directions and allows flexible packing formations and sequences.

Stacking 1000 bags per hour is a small feat for the robot arm, which operates at 90% capacity. Like caring for a desert plant, very little maintenance is needed, which frees up time and manpower.



Advancing with World Class Standards – Liquid Gold Motor Oils



Since NSL OilChem Waste Management (NOC) began its innovation to produce a range of quality motor oils, the quest to actively seek better ideas and methods for continuous improvement has not stopped. NOC is proud that prominent brand names such as Mercedes Benz and Volkswagen have approved of Liquid Gold to be used for their cars.

Mercedes Benz is a brand that needs no further introduction. Liquid Gold's engine oil (SYN-FLO LS 5W40) complies with the requirements of Mercedes-Benz specifications for Operating Fluids, sheet 229.5 and is therefore approved for the respective Mercedes-Benz vehicles and assemblies since October 2014.

Volkswagen, the top-selling and namesake marque belonging to the largest car maker in Europe, Volkswagen Group, tested Liquid Gold's engine oil (SYN-FLO LS 5W40) earlier in March this year and verified that it meets Volkswagen's

VW Standard 502 00 and VW Standard 505 00. It is suitable for use in Volkswagen's petrol and diesel engines, including engines with turbochargers.

Volkswagen means "people's car" in German. Hence, Volkswagen's approval is well in line with Liquid Gold's vision to deliver Great Performance, Greater Value, to the people.

Liquid Gold's engine oil have also met the American Petroleum Institute (API) and the Society of Automotive Engineers' standards, and is therefore authorized to carry API's "Donut" service symbol and "Starburst" certification logos as a mark of quality as well as a badge of assurance for buyers. API is America's largest and only national trade association that represents all aspects of America's oil and natural gas industry. Liquid Gold's strict emphasis on quality and production controls has allowed Liquid Gold to continue creating better performance and value-added products for its customers.



Mercedes Benz



Volkswagen



API's 'Donut' service symbol and 'Starburst' logo as a mark of quality assurance

NOC Launches Environmentally Friendly Products



The Cheston range of products was created by NSL OilChem Waste Management (NOC) to fit the needs of other industries as well as to protect the environment and the health of their employees.

The specially formulated range includes cement removers, lime cleaners, descalers, mould release agents and degreasers. They are safe to use, environmentally-friendly and biodegradable, meeting the requirements of Singapore's Maritime Port Authority and International Maritime Organization.

The CHESTON CEMENT-OFF S100 is a super strong cement remover, lime cleaner and descaler. It is non-fuming, non-caustic and non-flammable, making it safe and easy to use. Cement-OFF S100 is recommended for the removal of cement and concrete from trucks, drums and extension chutes. It is also appropriate for descaling cooling systems, heat exchangers and boilers.

Another product, the CHESTON ECOFORM is a water-based mould release agent which keeps moulds clean and minimizes build up. Ecoform 30 has lower viscosity which

provides easy application, while Ecoform 50 has the higher viscosity for optimal performance. This product is biodegradable, non-toxic and does not contain any Volatile Organic Compounds.

Lastly, the CHESTON HD CLEANER is an extra strong alkaline water-based degreaser suitable for removal of petrochemicals, alcohol and light hydrocarbons in cargo and fuel oil tanks. Its fast acting formula helps to save time and labour effort and being solvent-free with a low odour, it is safe for use in confined spaces.



Before

Application of CHESTON CEMENT-OFF S100 on cement surface



After



Before

After application of CHESTON HD Cleaner caked on stubborn grime or soil



After

New Ordering System Reduces Manpower



The services and retail sector in Singapore has been facing a serious labour crunch in recent years. In the name of boosting productivity, even neighbourhood coffee-shops are telling patrons to buy their own drinks at the drink stall as opposed to being usually served by a waiter. Some restaurants have implemented a queue messaging service that eliminates the need for long and tiresome queues.

Food and beverage establishments are forced to come up with innovative methods to maintain the standard of service to keep their customers and Marina Bistro is one of them. In June 2015, the Bistro implemented a wireless table locating technology into their daily operations to ensure patrons' continued enjoyment. The Table Locator not only enhances the speed of the delivery of food to guests but also reduces the reliance on manpower, leading to an increase in productivity.

There are no changes or shortfalls to the service that patrons receive upon their arrival at the bistro; they will still be greeted and seated by staff. After which, patrons can take their time to decide their order by filling up an order chit and make payment at the cashier counter. Upon payment, a table locator will be issued to patrons, which is to be placed on

their table for staff to serve their orders. After ensuring that food has been served correctly, the waiter will return the table locator to the cashier counter.

While this system requires guests to order and pay in advance at the counter, the overall delivery time has improved, thanks to the introduction of this system.

Guest to place the locator disc on their table at the indicated place.





360 Degree Leadership Trip in Penang

Some NSL OilChem Group (NOC) staff had an eventful and fun-filled weekend in July, gaining useful knowledge and strengthening bonds at NOC's staff retreat 2015 which was held at George Town Penang, (Malaysia), a UNESCO World Cultural Heritage City, from 10th to 12th July.

Turning Ordinary Employees into High Performing Profit Contributors

The retreat kicked off with a talk on 360 Degrees Leadership, conducted by business coach & trainer, Mr Andy Ng. The talk equipped the NOC team with skills, attitudes and knowledge in the areas of leadership for all levels.

The key objective is to turn NOC staff from ordinary employees into high performing profit contributors who will create massive results for both the company and themselves.

Penang Trailblazing

When it comes to food, there is no other better place than Penang on this side of the continent. Food lovers from all states of Malaysia and other countries flock to Penang

in search of their gastronomical Holy Grail tend to find themselves wholly satiated on their pilgrimage. To help everybody absorb Penang as much as they can within the short period of the trip, organisers conducted 'The NOC Penang Race' consisting of a Food Trail, Heritage Trail, Street Art Trail, Reality Escape Game and additional quests, arming participants with a painstakingly prepared map and guidebook to navigate the scorching streets of George Town.

NOC staff roamed around the

sunny town for most part of the day, devouring untold calories of sinfully-good food, clocking more than 16,500 steps in the process and shooting uncountable photos as evidence of their food, heritage, and street art conquests. The action-packed day finally ended with karaoke and a well-earned foot massage, considering that participants walked much more in one day than they would in the entire week.



The high performing profit contributors-to-be



EMIX Team Building in China

Management teams from E.MIX China and E.MIX Hong Kong met in Mission Hills Golf Club, Dongguan, on July 10th for a team building event. This is not an ordinary team building event as staff were treated to golf-putting competition, followed by a series of team games.

All staff were first briefed and given a crash course about golf. This was followed by a golf-putting competition which put everyone's skills to the test. The sport was a challenge especially for first timers. However, it was made easier with friendly guidance and advice of colleagues who were experienced golfers. There was a spirit of sharing, trust and teaching.

After the putting competition and a series of team games, the relationships of the management team from the two offices became closer. The relaxed, casual and cheerful atmosphere throughout the event had definitely played a part for these better-bonded relationships.

The golfing event, part of a series of away-from-office programs, provided a platform for the managing staff of different capacities from the two offices to communicate and take on challenges in an alternative environment.

After this event, everyone is confident that there will be even smoother operations between the two teams, reaching a new level of cross-border synergies.



Participants having a good time of bonding



SRC Activities

Night Cycling 2015

Following popular cycling events in East Coast and Pulau Ubin in the last two years, NSL's Sports and Recreational Club (SRC) introduced the inaugural night cycling in June, receiving favourable response by all staff who joined the event. After getting their equipment checked, everyone took off on their bikes excitedly and the group trailed along the park connector from East Coast Park (ECP) to Marina Bay Sands. The night was cooling and the city lights were mesmerizing as participants approached Gardens By the Bay (Bay East). But they could not stop for too many pictures as dinner was waiting at Lau Pa Sat, which was still some distance away.

The starving horde was delighted to see the sumptuous dinner spread prepared by the event organisers; the tables were so full of BBQ seafood and assortment of local delicacies that they wished they did not have to cycle back to ECP. Overall, the 20-km cycling journey under the starry night with a panoramic view of Singapore's skyline was an enjoyable end to the week. It was also a great opportunity for staff from different business units to mingle.

For those who missed this round, do stay tuned for the next session to be announced soon!



Makan time

2

28th SEA Games 2015

After 22 years, the SEA (Southeast Asia) Games has finally returned to Singapore in June 2015! NSL staff could not possibly miss the 28th SEA Games in our hometown. Thanks to the sponsorship from ACTIVESG, a total number of 49 NSL Group's staff and family members were able to catch the action-packed badminton competition live at the Singapore Indoor Stadium. Everyone cheered at the top of their lungs for Team Singapore and was beaming with pride for our athletes. Go Team Singapore!

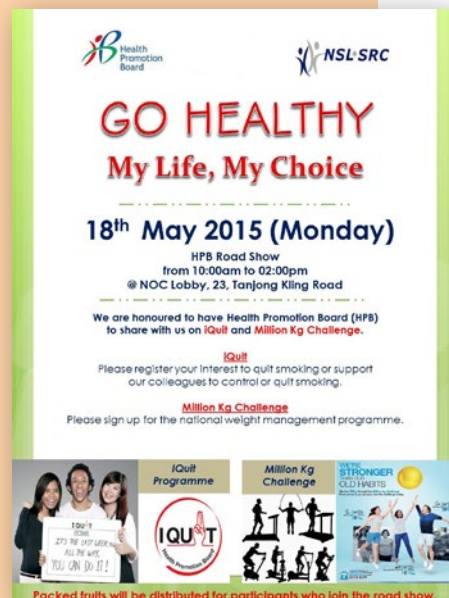
Taking a pose with Nila, the SEA Games mascot



Go Healthy, My Life, My Choice

NSL SRC was honoured to have Health Promotion Board (HPB) host a roadshow in NSL OilChem Waste Management (NOC) to share more on iQuit 28 Days and Million Kg Challenge in May. The campaign “Go Healthy, My Life, My Choice” aimed to help smokers quit their habit and raise awareness on maintaining a healthy weight through healthy eating and regular exercise. The iQuit 28 Countdown programme was launched islandwide by HPB in May. Studies have shown that the chances of staying smoke-free improve by five times in the first 28 days of kicking the smoking habit. 11 staff from NOC registered their interest to join the programme.

As part of the campaign to encourage staff to eat two servings of fruit everyday, packed fruits were distributed to NSL offices in Singapore.



Vocal Workshop

Bolstered by the enthusiasm after the Voice of NSL competition in the 2014 Family Day, NSL SRC organized a vocal workshop conducted by Lee Wei Song School of Music.

26 staff from different business units learned some basics of breathing techniques and utilizing different resonating chambers in the first part of the workshop conducted by Mr Jay Lim. In the second part of the workshop, Mr Lee Wei Song led the crowd in analysing Teresa Teng’s romantic ballad “我只在乎你” (I Only Care About You). He taught participants to sing the song with proper enunciation and emotions, after learning the breathing techniques earlier on. Everyone felt encouraged by Mr Lee, who urged them to enjoy singing with their hearts.



Being Prepared for Emergencies

Nobody can predict when an emergency or disaster will happen. The recent devastating explosion in Tianjin is one such example. The simple truth is that emergencies and disasters can strike anyone, anytime, and anywhere. Employees could be forced to evacuate their workplace when they least expect it.

A workplace emergency is an unforeseen situation that threatens employees, customers, or the public; disrupts or shuts down plant operations; or causes physical or environmental damage. Emergencies may be natural or manmade, for example:

- Tank fires
- Chemical spills
- Toxic gas releases
- Floods
- Explosion

The best way to prepare for an emergency is to conduct drill exercises so that everyone would know how to respond.



Knowing the evacuation procedures will help employees to be more prepared in times of emergencies, thereby reducing confusion or potential injury.

As part of NSL OilChem Waste Management's Emergency Response practice, some emergency drills conducted in the workplace include the following:



Company Emergency Response Team (CERT) Audit conducted by Singapore Civil Defence Force in the workplace to ensure the Emergency Response Team and employees are familiar with the evacuation drill exercise



Regular Emergency Response Team conducting a fire drill



Spillage training for the Emergency Response Team



First Aider refresher training



Safety Promotion- Fire Safety Prevention Briefing in the workplace conduction by Fire Prevention Centre



Health Gadgets

These days, hitting the treadmill to keep fit is not enough. With the gaining popularity of smart devices also came the development of innovative health gadgets that are easily compatible. Touted to help people monitor their fitness progress or track their glucose levels, the many health gadgets in the market today make it hard for the consumer to decide which one to get. We take a look at a few fancy gadgets out there.

Wireless Smart Gluco-Monitoring System

iHealth's Smart Gluco-Monitoring System aims to make diabetics' life easier. Using Bluetooth technology, it features a detachable dongle that snaps onto the bottom of smartphones. Just take a sample of your own blood using one of iHealth's test strips, slip the strip into the dongle, and the iHealth app registers your glucose level. It then saves and charts the data for you over time.



Wello iPhone Case by Azoi

This is not just an ordinary iPhone case, it's a device packed with \$2,000 worth of medical monitoring equipment. Simply put your fingers on the case for a few seconds and the device can tell you your heart rate, blood pressure, respiration, oxygen level, stress level, temperature, and much more. It automatically connects to your phone via Bluetooth. Note, however, this functions only as a monitoring device and does not diagnose or treat any illness.



Sensoria Smart Sock

Wear this comfortable smart sock and get feedback from your ankles, yes, ankles because that is where the pressure signals to this fitness tracker are. The Sensoria Smart Sock, designed for runners, will tell them how well they have been running and how to improve their performance over time. The best part of this invention is that it is still washable despite having signals or sensors in the socks. The accompanying app learns from your daily movements and acts like a virtual coach, providing tips on how fast your pace should be or how to land your feet correctly.



Disclaimer

Pictures are for illustration only.